



Free Scan Data

MatchApp

Basic Manual ■





TABLE OF CONTENTS

Chapter 01. Table of Contents	02	Chapter 08. Match the Upper Jaw and the Bite	12
Chapter 02. Introduction	04	Chapter 09. Open the Lower Jaw Scan Data and the Face Scan Data	14
Chapter 03. Setting	05	Chapter 10. Adjust Opacity	16
Chapter 04. Basic Action	06	Chapter 11. Trim	17
Chapter 05. Open Bite Scan Data	08	Chapter 12. Export File	18
Chapter 06. Match Data	09	Chapter 13. Start Again	19
Chapter 07. Move Steps	11		



INTRODUCTION.

MatchApp is a program that converts and outputs a CAD coordinate system by matching the upper and lower jaw scan data and the bite scan data.

The output data matches the face scan data obtained from SNAP. It is divided into three stages which are bite plate and bite scan data matching, the upper jaw and bite scan data matching, and confirmation and output. In the final stage, import the lower jaw scan data and the face scan data and check that all the data match at the appropriate location. The final result can be output to a file of the matched upper and lower scan data.

SETTING.

■ Design Type

After completing the matching process, select the type of the file to be output.

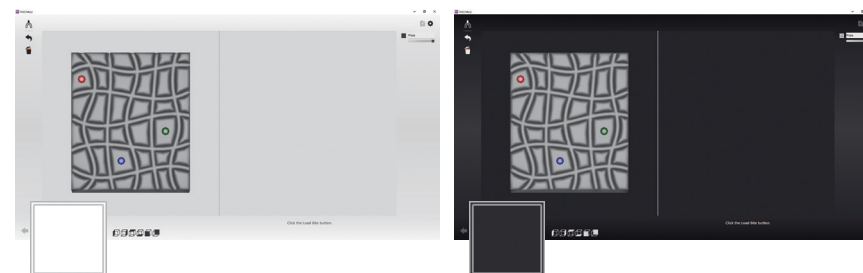
E Type

Face data is output in OBJ format for exocad.

S Type

Face data is output in PLY format for 3Shape.

■ Theme Colors



■ Languages

Korean

Set the system language to Korean.

English

Set the system language to English.

■ Help

On

Turn help messages on for each step.

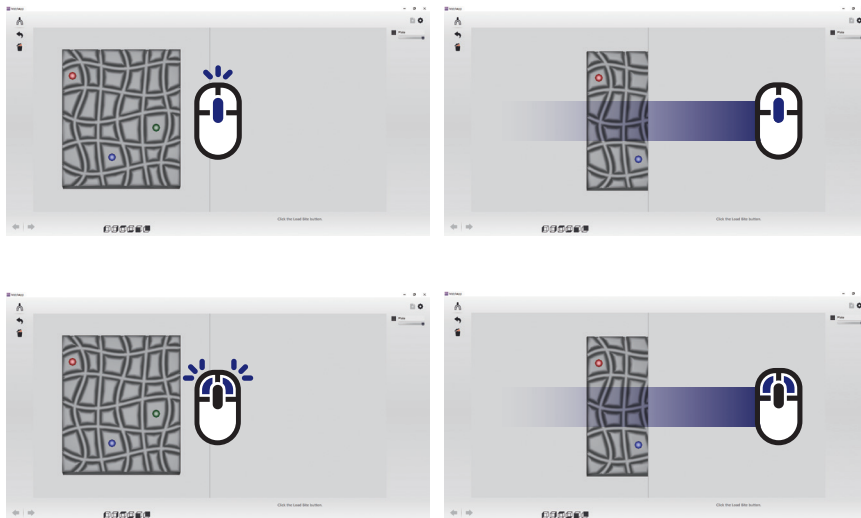
Off

Turn help messages off for each step.

BASIC ACTION

■ Parallel Movement

Click and drag the screen to be moved with the mouse wheel button (or both buttons), the camera moves in parallel as much as the mouse movement distance.



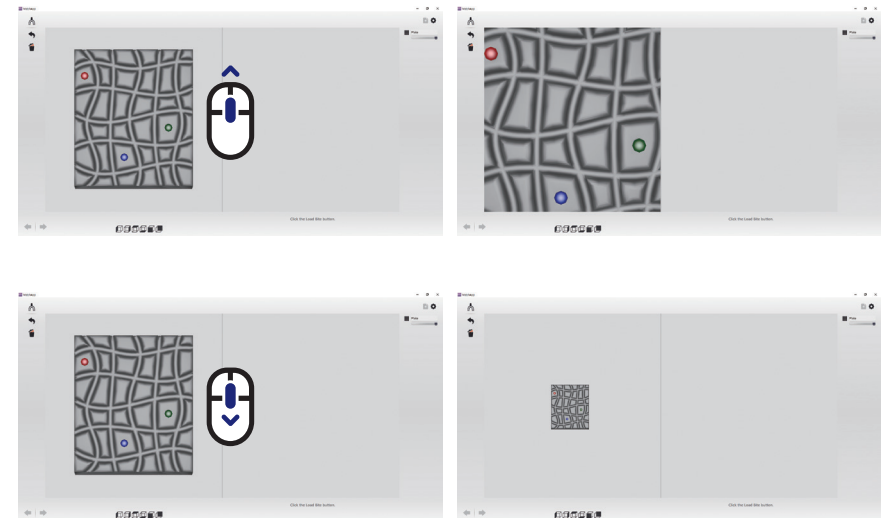
■ Rotative Movement

Click and drag the screen to be rotated with the right mouse button, the camera rotates as much as the mouse movement distance.



■ Zoom in and Zoom out

Zoom in or zoom out the object by scrolling the mouse wheel button as much as the distance of the wheel.

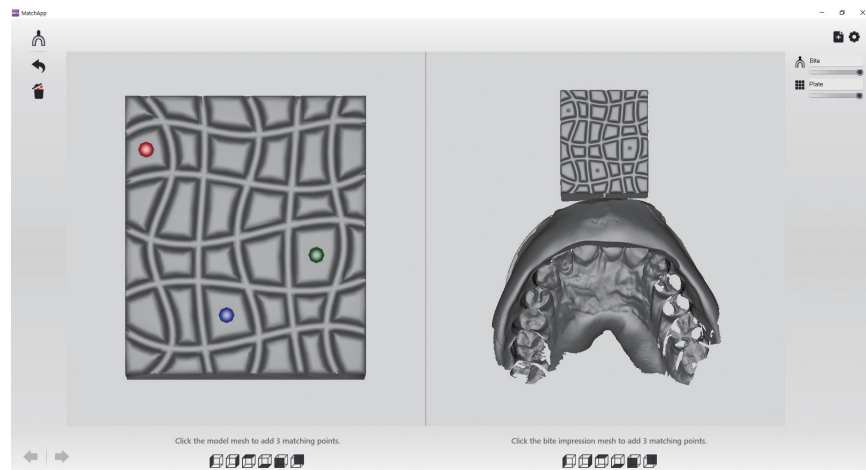


OPEN BITE SCAN DATA

■ Open Bite Scan Data



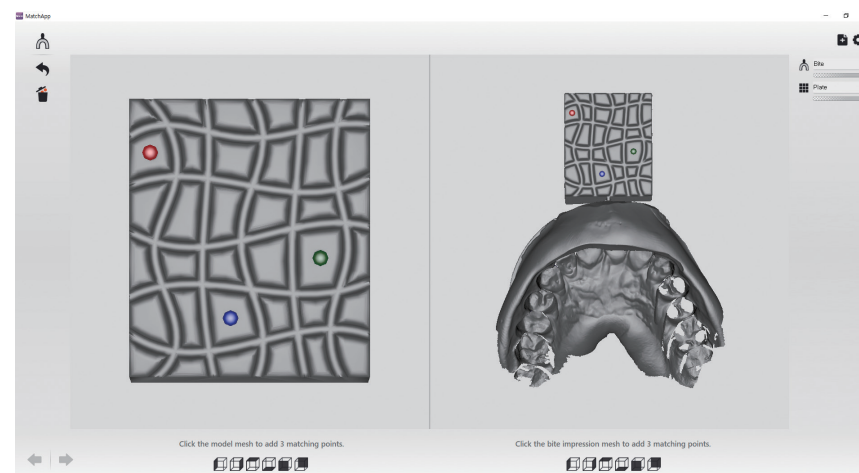
At the first stage of matching, click open file and bring the scan data file.
The loaded bite scan data is displayed on the right screen.



MATCH DATA

■ Add Points

Click the left mouse button to add three points each at the same location of the left data and the right data.



■ Delete Points



Deletes all points added to both screens.

■ Return and Restore the Points



Return to the added points.



Restore the points to the last action.

■ Matching initialization

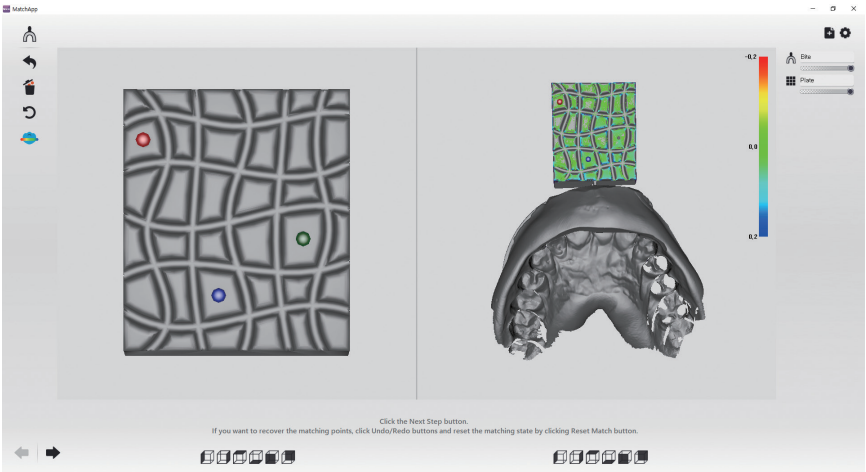


Initialize the matching status.
Matched data is displayed on the right screen.

■ Color Map



The height of the mesh data is expressed in color values.
It can be activated or deactivated by clicking the toggle button.



MOVE STEPS.

■ Next Step



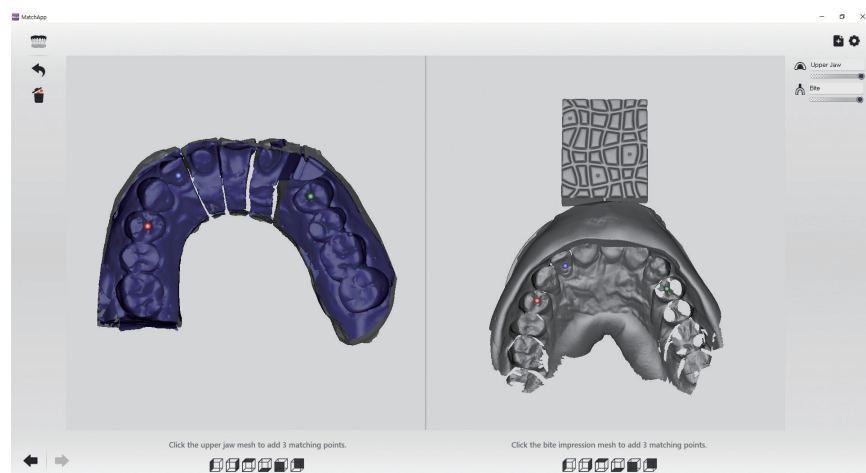
Go to the next step.

■ Previous Step

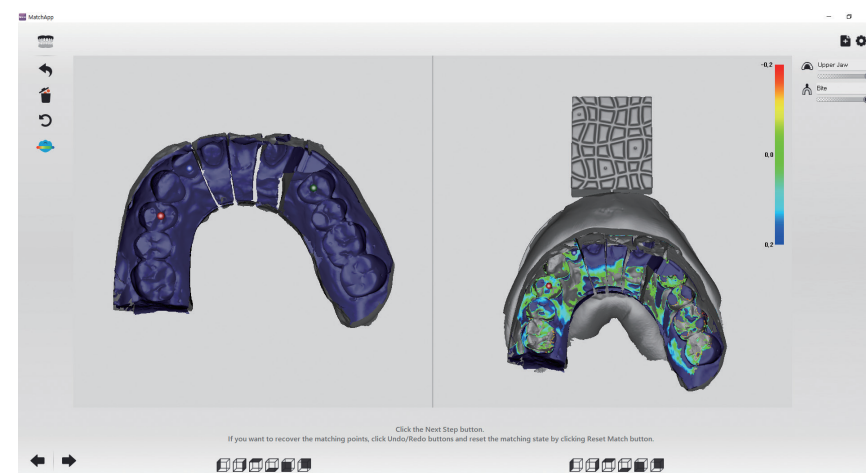


Go back to the previous step.

MATCH THE UPPER JAW AND BITE.



The upper jaw data is appeared on the left by clicking the open upper jaw button in the second stage of matching. After arranging the upper jaw data and bite scan data as shown on the screen, add matching points each at the same location.



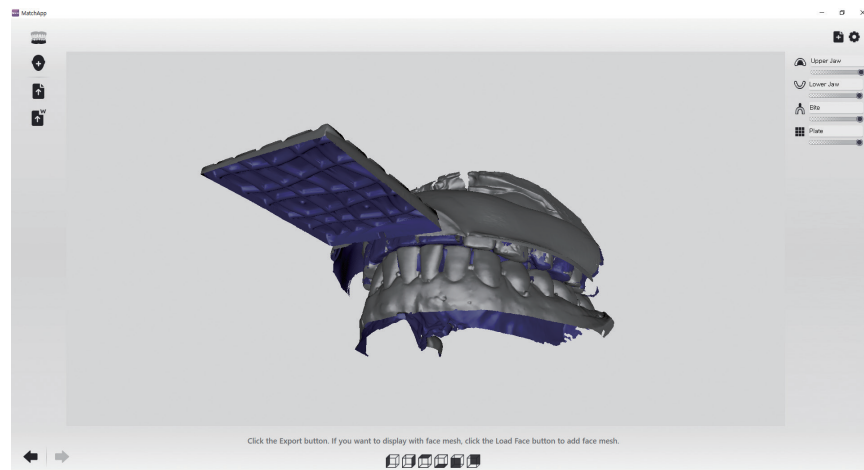
By clicking on 3 points, you may see that the points will automatically match the data. Go to the next step after checking the matching is in the correct position. If the matching is not successful, click the Revert button to proceed matching again.

OPEN THE LOWER JAW SCAN DATA AND THE FACE SCAN DATA ■

■ Open the Lower Jaw Scan Data



Click the lower jaw open button to load the lower jaw scan data.



■ Open the Face Scan Data



Click Open Face scan file to load the face scan data as needed.



ADJUST OPACITY .



■ Adjust Opacity

Adjust the mesh opacity of each data (maxillary scan data, mandibular scan data, bite scan data, face scan data (smile), and bite plate) in order from top to bottom. Drag the slider bar to adjust.

TRIM .

■ Trim



Remove the teeth part of the face scan data using the trim function.



EXPORT FILE ■

■ Export a File



By clicking Export file, and selecting the save location, and the matched upper and lower jaw scan data and face scan data are output to the folder.

■ Overwrite an Existing File



By clicking overwrite existing file, it will load the existing data file from its location and overwrite the data. Face scan data is output with the file name changed to match the existing project folder name.

START AGAIN ■

■ Start Again



All steps are initialized and start a new project by clicking the new project button.



doflab.com

DOF Inc. #601-602, 77, Seongsuil-ro, Seongdong-gu, Seoul, 04790 Korea (070-5057-3518)

Copyright © 2020 DOF Inc. All rights reserved.

Design and specifications are subject to change without notice to improve performance.